



HamiltonSchool

A PLACE OF EDUCATION, GROWTH & OPPORTUNITY

Welcome To Hamilton School

135 Bulmershe Road
Reading
RG1 5SG

Phone: 0118 937 5524
Email: hamadmin@maidenerlegtrust.org
Web: www.hamilton-school.co.uk

A PLACE OF EDUCATION, GROWTH & OPPORTUNITY

Meet The Headteacher

Hamilton School is a place of education, growth and opportunity for students with Social, Emotional, and Mental Health challenges.

We believe in the potential and resilience of every student. We understand that each individual has unique experiences and needs, and we are committed to providing a safe and nurturing environment where everyone can thrive.

At the heart of our philosophy is the understanding that SEMH challenges can impact various aspects of a student's life, including their academic progress, social interactions, and emotional well-being. Therefore, our dedicated team of educators and support staff work collaboratively to create a comprehensive and personalised approach to education.

We strive to foster a sense of belonging and community within our school. Our students will have the opportunity to build positive relationships with their peers and caring adults who are committed to their success. We encourage open communication, empathy, and respect, as we believe that a supportive and inclusive atmosphere is essential for growth and development.

In addition to providing a strong academic foundation, we focus on the development of essential life skills and emotional intelligence. Our curriculum is designed to promote self-awareness, self-regulation, and effective communication, empowering our students to navigate the challenges they may face both within and outside the school environment.

We understand that progress comes in various forms and at different paces. Therefore, we celebrate every achievement, no matter how big or small, and encourage a growth mindset that emphasises effort, perseverance, and resilience. Our goal is to empower our students to become confident and independent learners who are ready to embrace future opportunities.



Miss Concannon

Introduction

WELCOME TO THE HAMILTON COMMUNITY!

Inside this brochure you will find some useful information about Hamilton School as well as contact details for the key staff you and your child will meet during their transition to Hamilton.

We know a school move can be worrying for any child, so we aim to do all we can to make the transition as smooth as possible.

Within this brochure you will find a breakdown of the transition programme that we use at Hamilton, to ensure your child will feel confident and comfortable in continuing their learning journey with us.

We look forward to working with you to give your child the opportunity to learn in a safe and stimulating environment.



Meet our Senior Leadership Team



Mr Woolford

Deputy Head



Ms Biddiss

Assistant Headteacher

Meet our Transition Team



Mr Versace

Transition Lead & SENCO



Ms Whalley

Transition Teacher



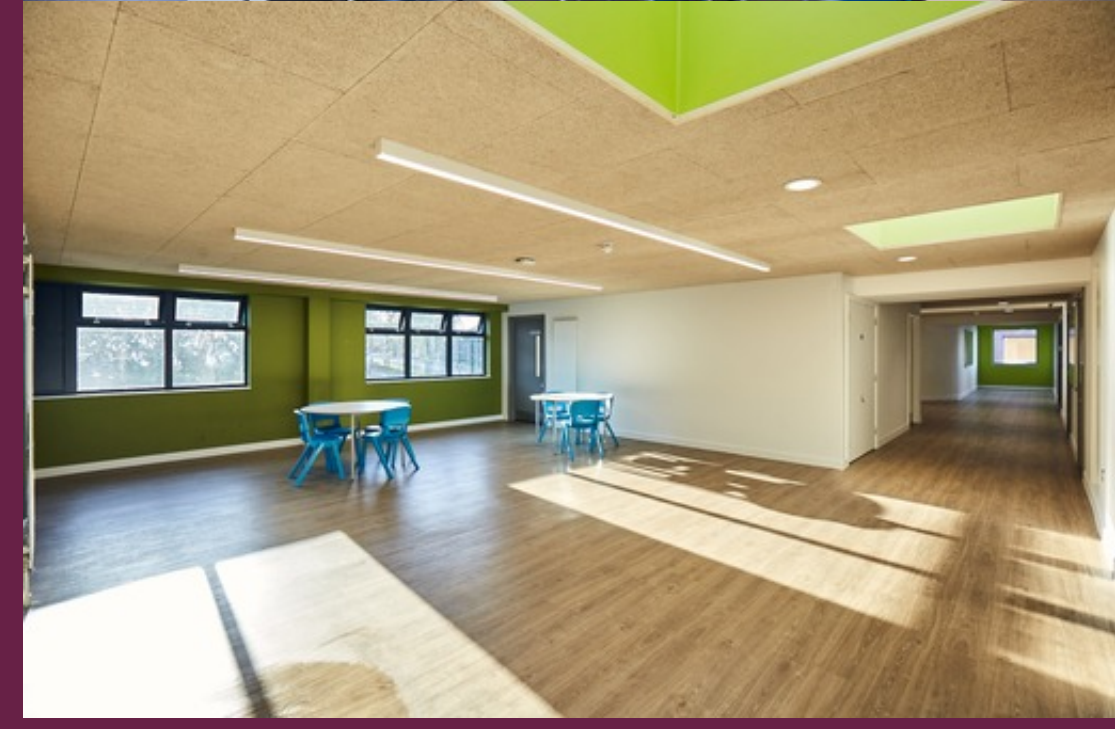
Miss Begum

Transition TA



Mr Richards

Transition TA



MEET OUR STUDENT SUPPORT TEAM



Miss Millward

Student Support Lead



Mrs Lawson-Smith

Support Team Leader
& Attendance Lead



Miss Archer

Student Support Team



Mrs Johnson

Student Care Officer

MEET OUR SCHOOL ADMINISTRATION TEAM



Ms Ward

Office Manager and PA to
Headteacher



Mrs Wilson

Administration Officer



Mrs Walker

Finance Administrator



Mrs Nemeth

SEN Manager

Our School Uniform

Students at Hamilton School are expected to wear a school uniform. The school uniform is as follows:

- Plain white polo shirt (i.e. with collar)
- Black / Dark trousers - No jeans
- Dark shoes / trainers
- Burgundy sweatshirt / hoody with school logo (supplied by school)

Other items:

- Hijab, if worn, should be a dark colour, ideally black or grey.
- Hairstyles should not be attention-seeking. Only natural hair colours are permitted and long hair should be tied back.
- Jewellery is not permitted except watches and studs earrings (no more than one per ear). Facial piercings are not permitted.
- Make-up (including fingernails) should be natural and inconspicuous.

Students may wish to bring a change of clothes for PE and Sport. A place for changing will be provided. Suggested items for PE and Sport include:

- Shorts
- Polo shirt or t-shirt
- Trainers suitable for sport
- Tracksuit bottoms

Please ensure all items are clearly labelled with the child's name



What a Typical School Day Looks Like

8.30am	Breakfast
8.45am	Tutor
9.15am	Lesson 1
10.00am	Lesson 2
10.45am	Break
11.05am	Reading
11.30am	Lesson 3
12.15pm	KS3 Lunch
12.35pm	KS4 Lunch
12.55pm	Lesson 4
13.40pm	Lesson 5
14.25	Home Time



OVERVIEW OF OUR TRANSITION

1

Tour

It would be our pleasure to show you and your child around Hamilton School. You will be able to see the environment your child will be learning in and familiarise yourselves with the layout and surroundings. You will be able to meet our staff and ask any questions you may have.

2

School Visit

We will come and visit your child and their primary staff in the familiar environment of their current educational setting. We want to meet with staff who know your child and how they work best. This will give us a chance to meet your child and learn more about them.

3

Home Visit

We want your child's time with us to be a team effort. Having a home visit allows us to see your child in the setting they feel most comfortable in and begins the building of a positive working relationship between home and school.

4

Afternoon Sessions

Over a series of afternoons, from 3pm - 4pm, your child will be invited to spend time participating in a range of activities, such as cooking, art or sport, as well as completing baseline assessments for reading and mathematics. This will give us a foundation for supporting your child in their academic progress as well as building their social confidence with other new students to the school.

5

Half Days

Ideally, we will also invite your child for some extended sessions where they will attend formal lessons and experience our lesson structure. This will also be an opportunity to meet members of staff and begin to build those important social relationships as well as learning the routines and procedures of an average day at Hamilton School.



Contact Details

Office Phone Number

0118 937 5524

Email Address

Hamadmin@maidenerlegthrust.org

Website

www.hamilton-school.co.uk



HAMILTON SCHOOL

A place of Education, Growth & Oppportunity

We look forward to meeting you soon!